



MY TRIP TO THE ZOO







Conform Defined

Comply with rules, standards, or laws

**Behave according to socially
acceptable conventions or standards**

Be similar in form or type

**Conforming is all about allowing your
environment to dictate your actions**





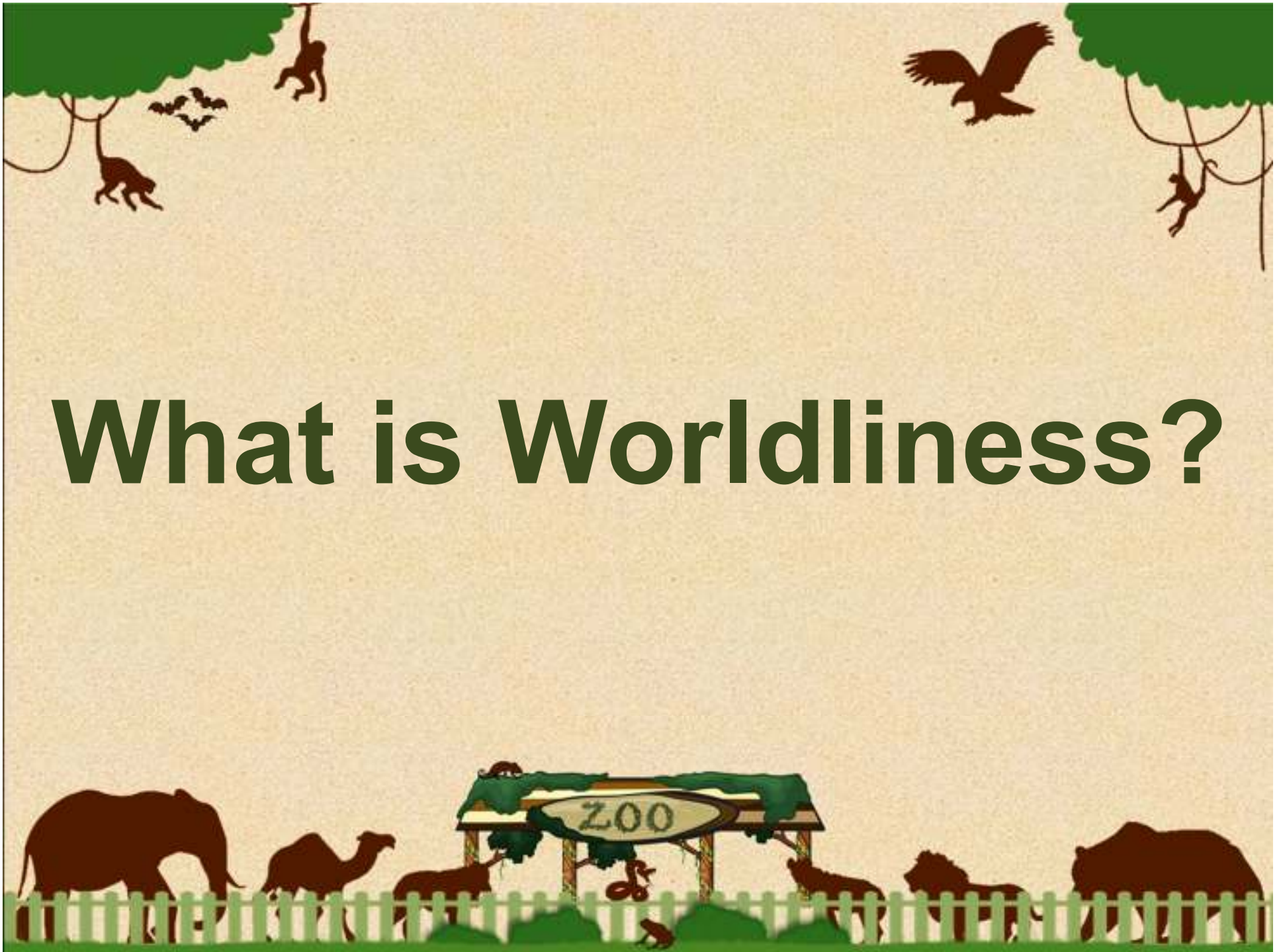
Romans 12:2

And do not be conformed to this world, but be transformed by the renewing of your mind, so that you may prove what the will of God is, that which is good and acceptable and perfect.

Don't let the **worldliness** define your faith and thus define your image



What is Worldliness?



1 John 2:15

Do not love the world or anything in the world. If anyone loves the world, love for the Father is not in them.

**You can not love God
and love the world**



2 Timothy 4:9-10

Do your best to come to me quickly, for Demas, because he loved this world, has deserted me and has gone to Thessalonica. Crescens has gone to Galatia, and Titus to Dalmatia.

It will pull us away from faith





1 Corinthians 3:1

Brothers and sisters, I could not address you as people who live by the Spirit but as people who are still worldly—mere infants in Christ.

It can make us immature





2 Corinthians 1:17

Was I fickle when I intended to do this? Or do I make my plans in a worldly manner so that in the same breath I say both “Yes, yes” and “No, no”?

It can make us Fickled



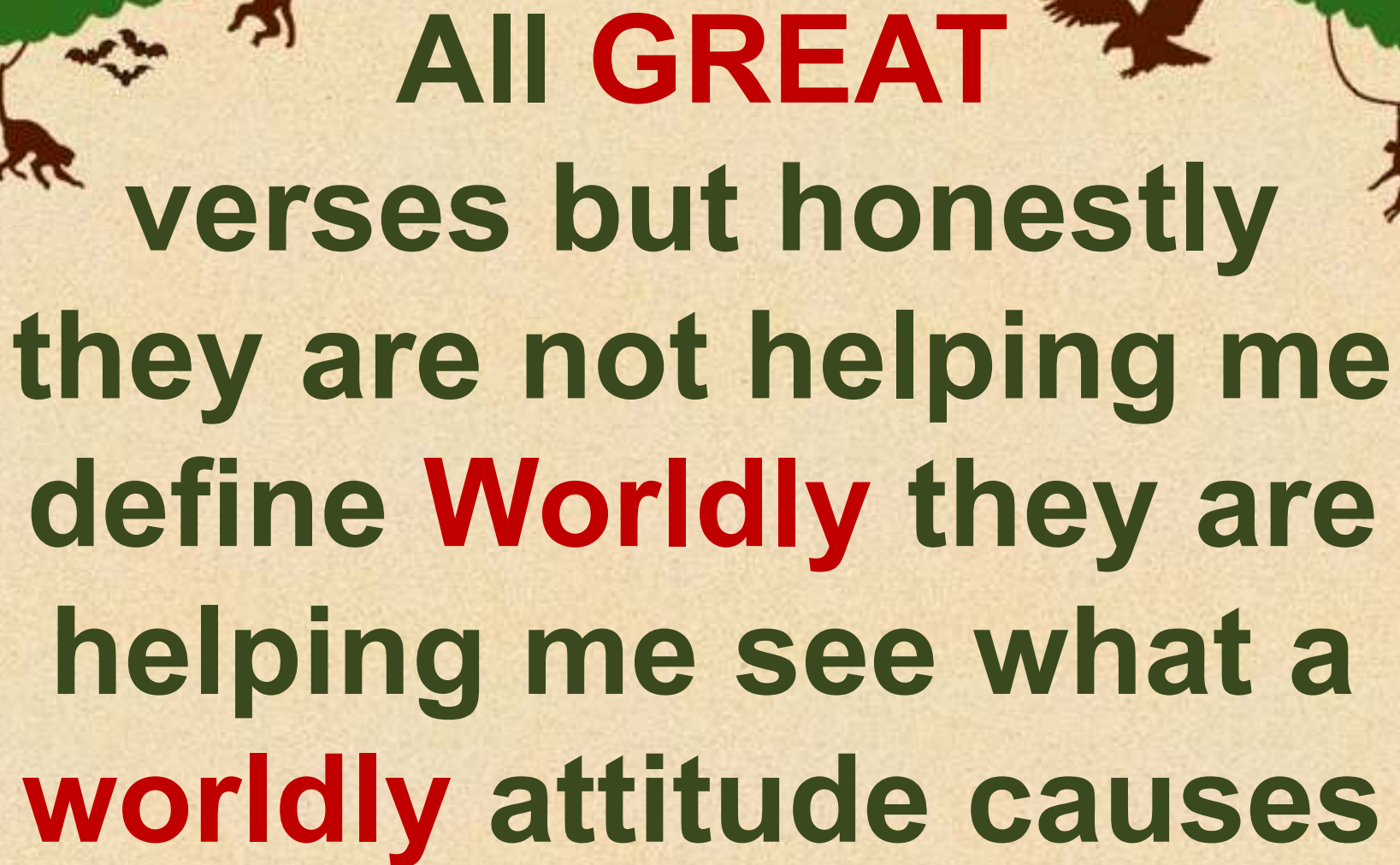


2 Corinthians 7:10

Godly sorrow brings repentance that leads to salvation and leaves no regret, but worldly sorrow brings death.

**It can lead to a
lack of repentance**



The image features a decorative border with silhouettes of various animals. At the top, there are monkeys hanging from vines, an eagle in flight, and a monkey swinging on a vine. At the bottom, there is a zoo sign that says 'ZOO' with silhouettes of an elephant, a camel, a lion, and a bear behind a fence.

All **GREAT** verses but honestly they are not helping me define **Worldly** they are helping me see what a **worldly** attitude causes

Jesus Defined

Jesus turned and said to Peter, “Get behind me, Satan! You are a stumbling block to me; you do not have in mind the concerns of God, but merely human concerns.”

Matthew 16:23





Jesus Defined

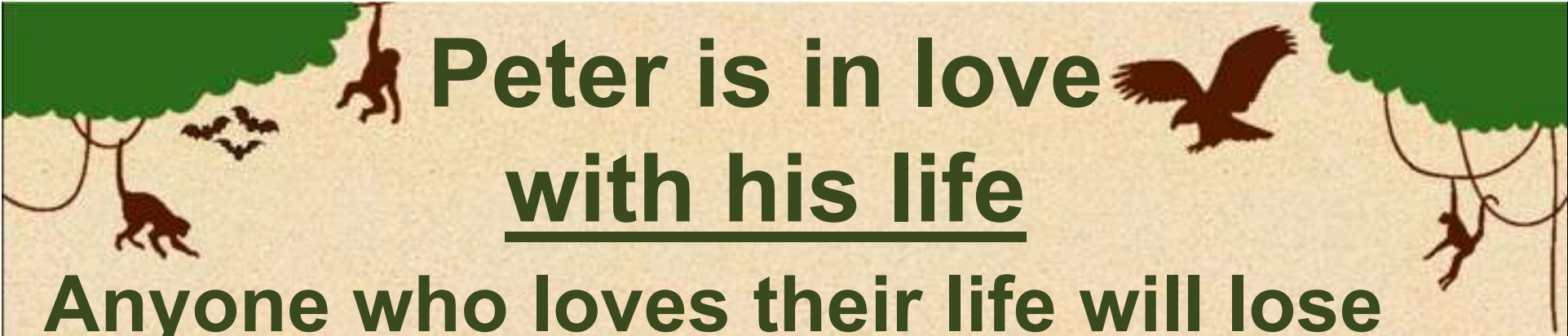
Jesus tells **Peter** his mind
is focused on human concerns

Really **Peter** is only focused on
the concerns of one human... **Peter**

Peter's focus on what he wants to happen is
now in direct conflict with what God wants

Peter decides what he wants
is the most important thing



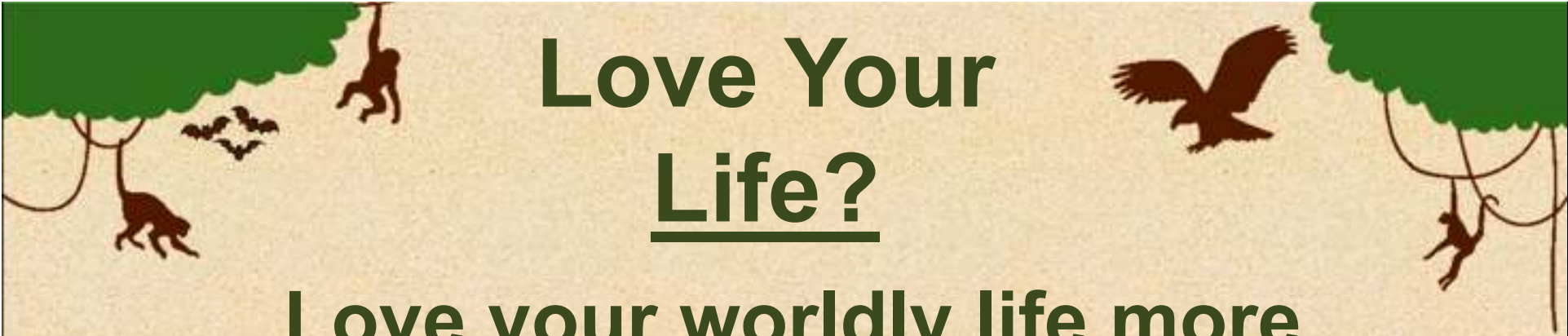


Peter is in love with his life

Anyone who loves their life will lose it, while anyone who hates their life in this world will keep it for eternal life.

John 12:25





Love Your Life?

**Love your worldly life more
than God loose your life**

**Love your eternal life more than the life
you have in the world you keep it**



The image features a decorative border with silhouettes of various animals. At the top, there are monkeys hanging from vines, an eagle in flight, and another monkey hanging from a vine. At the bottom, there is a green picket fence with silhouettes of an elephant, a camel, a lion, and a bear. In the center of the bottom border is a sign that says "ZOO".

Worldly

**of or concerned with
material values or
ordinary life rather than
a spiritual existence**



How to Overcome Worldliness

It was about Peter's mindset



**How did Paul tell
us to not conform?**

Renew our mind

**How do we renew
our mind?**

Refocus it on God's plan



**Change
Your Mind
not Your Colors!**

